

Section 3 – Durham Local Safeguarding Children Board

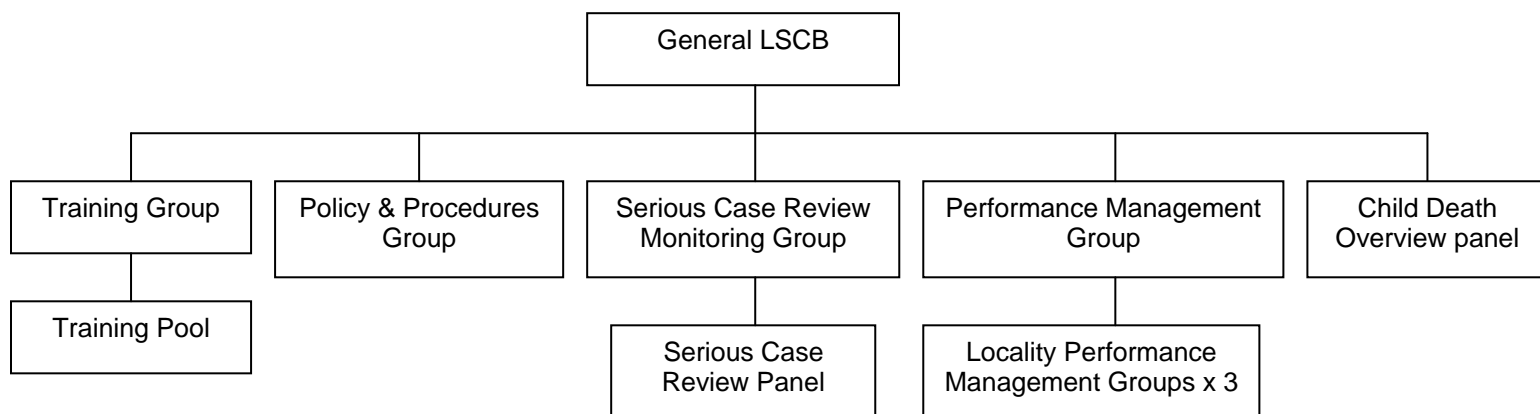
Contents

| | |
|---|---------------|
| INTRODUCTION | PAGE 2 |
| LSCB STRUCTURE | |
| CORE OBJECTIVES | |
| LSCB ROLE | PAGE 3 |
| LSCB FUNCTIONS | PAGE 4 |
| LSCB GOVERNANCE & OPERATIONAL ARRANGEMENTS | |
| LSCB MISSION STATEMENT | PAGE 5 |
| AGENCIES REPRESENTED ON THE LSCB | |
| ROLE OF INDIVIDUAL MEMBERS | PAGE 6 |
| PARTICIPATION OF CHILDREN & YOUNG PEOPLE | |
| FINANCE & STAFFING | |
| <u>LSCB Officers</u> | PAGE 7 |
| PRODUCTION OF AN ANNUAL REPORT | |
| PERFORMANCE MANAGEMENT | |

INTRODUCTION

3.1 The detailed functions of the LSCB are outlined in Working Together to Safeguard Children (2010) Chapter 3. These functions and Governance arrangements are further outlined in the Durham LSCB Memorandum of Understanding (February 2010)

LSCB STRUCTURE



CORE OBJECTIVES

3.2 Durham LSCB has a responsibility for co-ordinating and ensuring the effectiveness of what their member agencies do individually and together. Durham LSCB is also required to produce and publish an Annual report on the effectiveness of safeguarding in County Durham. This report is then considered by the Children's Trust in their production of the Children and Young People's Plan. The core objectives of the LSCB are:

- to co-ordinate what is done by each person or body represented on the Board for the purpose of safeguarding and promoting the welfare of children.
- to ensure the effectiveness of what is done by such person or body for that purpose.

LSCB ROLE

3.3 Durham LSCB focus on safeguarding and promoting the welfare of children in three broad areas of activity:

- 1 Identification and prevention of maltreatment or impairment of health or development, and ensure children are growing up in circumstances consistent with safe and effective care. For example:
 - mechanisms to identify abuse and neglect wherever they may occur;
 - work to increase understanding of safeguarding children issues in the professional and wider community, promoting the message that safeguarding is everybody's responsibility;
 - work to ensure that organisations working or in contact with children, operate recruitment and human resources practices that take account of the need to safeguard and promote the welfare of children;
 - monitoring the effectiveness of organisations' implementation of their duties under section 11 of the Children Act 2004;
 - ensuring children know who they can contact when they have concerns about their own or others' safety and welfare;
 - ensuring that adults (including those who are harming children) know who they can contact if they have a concern about a child or young person;
 - work to prevent accidents and other injuries and, where possible, deaths; *and*
 - work to prevent and respond effectively to bullying

- 2 Pro-active work that aims to target particular groups. For example:
 - developing/evaluating thresholds and procedures for work with children and families where a child has been identified as 'in need' under the Children Act 1989, but where the child is not suffering or likely to suffer significant harm; *and*
 - work to safeguard and promote the welfare of groups of children who are potentially more vulnerable than the general population, for example children living away from home, children who have run away from home, children missing from school or childcare, children in the youth justice system, including custody, disabled children and children and young people affected by gangs

- 3 Responsive work to protect children who are suffering, or at risk of suffering significant harm.
 - children abused and neglected within families, including those harmed:
 - in the context of domestic abuse; *and*
 - as a consequence of the impact of substance misuse, or of parental mental ill health;
 - children abused outside families by adults known to them;
 - children abused and neglected by professional carers, within institutional settings, or anywhere else where children are cared for away from home;
 - children abused by strangers;
 - children abused by other young people;
 - young perpetrators of abuse;
 - children abused through sexual exploitation; and
 - young victims of crime.

LSCB FUNCTIONS

- 3.4 The functions are outlined in the Durham LSCB **Governance Arrangements and Memorandum of Understanding** (February 2011) and can be summarised as follows:

- Thresholds, Policies and Procedures
- Communicating and Raising Awareness
- Monitoring and Evaluation
- Planning and Commissioning
- Function relating to Child Deaths
- Serious Case Reviews
- Co-ordinating and ensuring the effectiveness of local individuals' and organisations' work to safeguard and promote the welfare of children.

LSCB GOVERNANCE AND OPERATIONAL ARRANGEMENTS

- 3.5 Governance and operational arrangements are detailed in the Durham LSCB publication, "*Governance Arrangements & Memorandum of Understanding*".

LSCB MISSION STATEMENT

3.6 The mission of the LSCB is:

- To safeguard and promote the welfare of all children in County Durham by establishing inter-agency co-operation and collaboration;
- To promote public confidence in the child protection system by ensuring that a proper balance is achieved between intrusion into family life and the necessary protection of children from harm;
- To understand the nature of child abuse and foster strategies that reduce incidence and effect.

3.7 The key task of the LSCB is the safeguarding of children and young people and contributing to the Every Child Matters outcome of Staying safe. In turn this contributes to the overall delivery of Every Child Matters within County Durham.

AGENCIES REPRESENTED ON THE LSCB

Durham County Council

- County Durham Adult, Wellbeing and Health
- County Durham Children and Young People's Service
- Children & Young People's Service – Countywide Services
- Co Durham Youth Offending Service
- Leisure Services
- Housing

Health

- NHS County Durham
- County Durham & Darlington NHS Foundation Trust
- County Durham & Darlington Community Health Services
- North East Strategic Health Authority
- North Tees and Hartlepool NHS Foundation Trust
- Tees, Esk & Wear Valley NHS Foundation Trust
- County Durham Drug & Alcohol Action Team

Durham Constabulary

Hassockfield Secure Training Centre

Durham Tees Valley Probation Trust

Durham Association of Secondary Heads

Durham Colleges

Cafcass

Durham Diocese

Barnardos

Lay Member

- 3.8 The LSCB has access to appropriate expertise and advice from all the relevant sectors, including a Designated Paediatrician and Nurse as well as legal advice provided by Durham County Council Corporate & Legal Services.
- 3.9 Whilst the work of the LSCB contributes to the wider goals of improving the wellbeing of children, it has a particular focus on the 'staying safe' outcome.
- 3.10 The LSCB is not accountable for the operational work of individual agencies. Each Board partner retains their own existing lines of accountability for safeguarding and promoting the welfare of children by their services. The LSCB does not have the power to direct other agencies.

ROLE OF INDIVIDUAL MEMBERS

- 3.11 The individual members of Durham LSCB have a duty as members to contribute to the effective work of the LSCB and in recommending or deciding on the necessary steps to continually improve safeguarding services for children and young people in Durham. To be effective this needs to take precedence, if necessary, over their role as representative of their agency. Detailed information is available in the Governance Arrangements & Memorandum of Understanding

PARTICIPATION OF CHILDREN & YOUNG PEOPLE

- 3.12 Durham LSCB is committed to seeking the views of children and their families in order to develop and continually improve the services to safeguard and promote the welfare of children. Our commitment is evidenced by our consultation and evaluation arrangements.

FINANCING & STAFFING

- 3.13 LSCB partner agencies contribute to the LSCB providing sufficient resources to carry out its functions and work effectively. The details of contributions and financial arrangements can be found in the LSCB Governance Arrangements & Memorandum of Understanding.

LSCB Officers

- Business Manager
- Quality & Performance Manager
- Training Co-ordinator
- Development Officer
- Admin Co-ordinator
- Administrator

PRODUCTION OF AN ANNUAL REPORT

3.14 The LSCB is required to produce and publish an **annual report** on the effectiveness of safeguarding in the area. The report will recognise achievements and progress that has been made as well as providing a realistic assessment of the challenges that still remain. The report will also include a clear account of progress that has been made in implementing actions from individual Serious Case reviews completed during the year in question, plans to evaluate the impact of these actions and to monitor how these improvements are being sustained over time. The LSCB will send a copy of the annual report to the Children's Trust Board which will be expected to draw upon the advice from and the findings in the LSCB annual report in preparing the Children and Young Peoples plan.

PERFORMANCE MANAGEMENT

3.15 The LSCB has a role in ensuring the effectiveness of work to safeguard and promote the welfare of children by member organisations through a peer review process based on self evaluation. This is achieved to a large extent through performance indicators and joint audits. This work is intended to:

- Promote high standards of safeguarding work.
- Foster a culture of continuous improvement.
- Identify and act on weaknesses in services.

3.16 There will be instances where a local agency is not performing effectively in safeguarding and promoting the welfare of children and the LSCB is not convinced that any planned action to improve performance will be adequate. Where this occurs, the Chair of the LSCB or designated person, will explain these concerns to the individual agency in order that they can take action, e.g.:

- The most senior individuals in the agency;
- The relevant inspectorate and, if necessary, to the relevant Government department;

3.17 Ofsted monitor and evaluate the effectiveness of the LSCB itself.